

General Information About Power BI

Introduction

Power BI is a collection of software services, apps, and connectors that work together to turn your unrelated sources of data into coherent, visually immersive, and interactive insights. It primarily consists of a Windows desktop application called **Power BI Desktop** and, depending on whether you want to use an on-premise or cloud-based solution, one of two options 1) if using a cloud based solution, an online SaaS (Software as a Service) service called the **Power BI service** or 2) if using an on-premise solution, a on-premise service called **Power BI Report Server**.

Power BI Desktop

Power BI Desktop is a free application you can install on your local computer that lets you design visuals and reports. You can use it to do the following:

- Connect to, transform, and visualize your data.
- Create visuals, such as charts or graphs, that provide visual representations of the data
- Create reports that are collections of visuals, on one or more report pages
- Publish and share reports with others using the Power BI service or Power BI Reporting Server

It comes with only one license version which is free. However, be careful when researching because it can be confusing. It will sometimes be shown as having different licenses (e.g. Pro and Premium) but those licenses really apply to the either the Power BI service or Power BI Server which you can think as the back end services with run and host the Power BI tools, reports, and views.

It also comes in two versions depending on what you are going to use it for: **need to confirm**

- Power BI Desktop for the Report Server
- Power BI Desktop for the Power BI service

Power BI service

Power BI service is sometimes referred to as Power BI online or app.powerbi.com.

It comes with two license options:

- Power BI Pro
- Power BI Premium

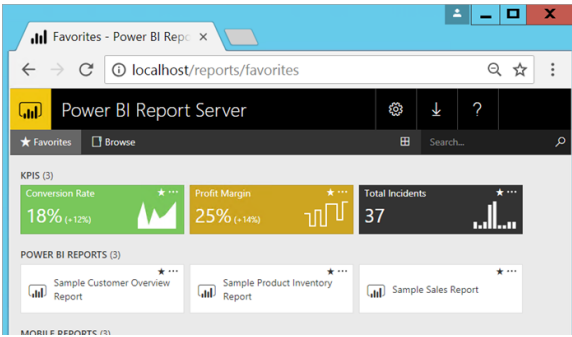
Power BI Report Server

Power BI Report Server is an on-premises report server with a web portal in which you display and manage reports and KPIs, along with the tools to create Power BI reports, paginated reports, mobile reports, and KPIs. **It is similar to both SQL Server Reporting Services and the Power BI online service**, but in different ways. Like the Power BI service, Power BI Report Server hosts Power BI reports (.PBIX) and Excel files. Like Reporting Services, Power BI Report Server is on premises, and hosts paginated reports (.RDL). Power BI Report Server is a superset of Reporting Services. In sum, **everything you can do in Reporting Services, you can do with Power BI Report Server and more, with the addition of support for Power BI reports.**

It comes with two license options:

- Power BI Premium
- One that comes with SQL Server Enterprise Editions

The entry point for Power BI Report Server is a secure web portal you can view in any modern browser. Here, you can access all your reports and KPIs. The content on the web portal is organized in a traditional folder hierarchy.



A common flow of work in Power BI begins by connecting to data sources and building a report in Power BI Desktop. That report is then published from Desktop to Power BI service, and shared so users in service and mobile can consume (view and interact with) the report. Sometimes, you may want to give colleagues permissions similar to your own (creator permissions) so that they can use service to edit reports, create dashboards, and share their work too.

Product Comparison

	Power BI Report Server	Power BI service
Deployment	On-premises or hosted cloud	Cloud
License	Power BI Premium	Power BI Pro and/or Power BI Premium
Create Power BI reports in Power BI Desktop	Yes	Yes
Create Power BI reports in the browser	No	Yes
Dashboards	No	Yes
Power BI Desktop	Power BI Desktop for the report server Version optimized for Report Server, available for download with Report Server	Power BI Desktop for the Power BI service Version optimized for Power BI Service, available from the Windows Store

Product Licensing

Product	Prices	
License for Desktop Client Application		
Power BI Desktop	Free	Power BI Desktop works cohesively with the Power BI service by providing advanced data exploration, shaping, modeling, and report creation with highly interactive visualizations. This is a free desktop application installed on your local client machine that is used to design reports. There are two versions: <ul style="list-style-type: none"> • Power BI Desktop for the Report Server • Power BI Desktop for the Power BI service
Licensing for Power BI service and Power BI Server		
Power BI Pro	\$9.99 per user per month	Power BI Pro is an individual license that allows access to all content and capabilities in the Power BI service, including the ability to share content and collaborate with other Pro users. Only Pro users can publish to and

consume content from app workspaces, share dashboards, and subscribe to dashboards and reports.

Power BI Premium

Capacity pricing per node per month

Premium provides dedicated capacity to deliver more consistent performance and support larger data volumes in Power BI. For individual users, Premium also enables widespread distribution of content by Pro users without requiring per-user licenses for recipients viewing the content.

Other products available:

- Power BI Mobile
- Power BI Embedded

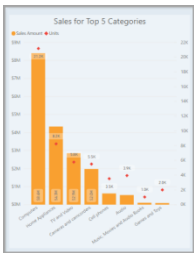
Special note about sharing:

With sharing, whether you share content inside or outside your organization, you and your recipients need a Power BI Pro license, or the content needs to be in a Premium capacity.

Power BI Terms

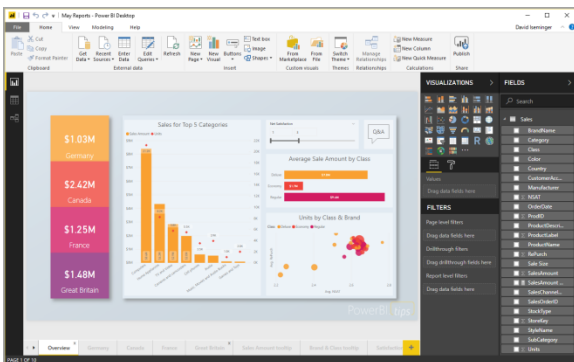
Visual

A visual is a graphic representation of the data in your model, such as charts or graphs, that provide visual representations of the data.



Reports

A collection of visuals, in one Power BI Desktop file, is called a report. A report can have one or more pages, just like an Excel file can have one or more worksheets. In the following image you see the first page of a Power BI Desktop report, named Overview (you can see the tab near the bottom of the image).



Other Topics

Power BI Embedded

This is another product that allows you to embed Power BI (it's visuals, objects, etc...) in your own custom application. The end user does not sign into Power BI or need to know anything to do that. To use it, you need at least a Power BI Pro license and user that acts as a master account that acts as proxy between your application and Power BI. You'll also need an Azure workspace and capacity from Azure as well. You use API scripts to use the embedded Power BI within your application.

Appendix

Useful Links

<https://docs.microsoft.com/en-us/power-bi/report-server/get-started>

<https://docs.microsoft.com/en-us/power-bi/report-server/tutorial-explore-report-server-web-portal>

Working in Excel

Analyze in Excel (works only with the cloud-based Power BI service – does not work with Power BI Reporting Server)

<https://docs.microsoft.com/en-us/power-bi/service-analyze-in-excel>

Subscription ID

02aa4232-647e-486e-aa8a-c02c1fa735ea

You actually shouldn't be able to RDP into that one. If it's a DC, Domain Controller, VM setup by the Report server setup, it won't have a Public IP.